

What is IMiN™ Communicator?

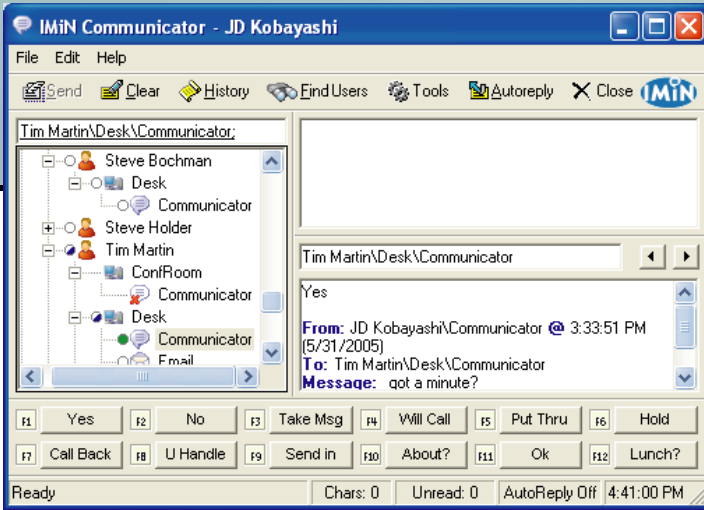
IMiN™ Communicator is instant messaging for business: customizable, secure and scalable.

IMiN Communicator

Secure Instant Messaging for Business

Instant One Touch Responses

IMiN™ Communicator allows users to define up to 24 "one touch" responses so that responses can be sent quickly and with minimal interruption.



Send and Receive Email, SMS and Pager Messages

Users can not only send messages to one another using IMiN™ Communicator, they can also send and receive Email, SMS and Pager messages.

Connect From Anywhere Securely

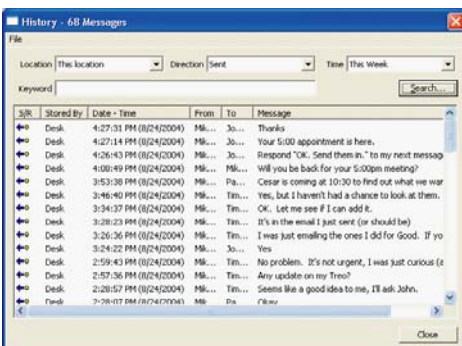
IMiN™ Communicator runs on top of a new infrastructure called EBS (Enterprise Business Services). Users can connect via a WAN or the Internet through just one TCP port. IMiN™ Communicator supports a number of industry standard encryption methods such as AES.

Scalability

EBS is a platform conceived to accommodate tens of thousands of users. Because of this design, there is virtually no limit on how many users can interact via IMiN™ Communicator.

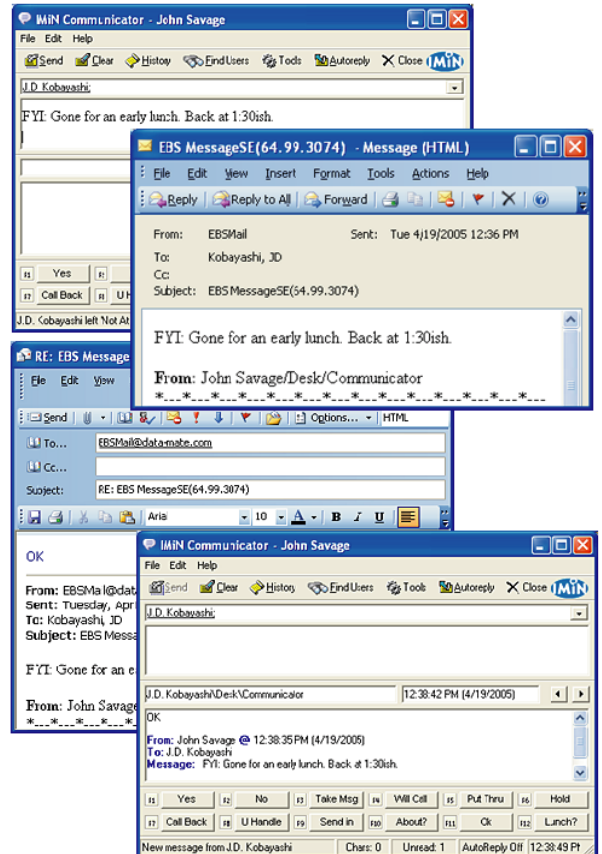
Active Directory Integration

Optional integration with Microsoft's Active Directory allows users to use their standard Windows username and password to log into IMiN™ Communicator. Active Directory updates are reflected in IMiN™ within minutes.



Centralized History Storage

All messages sent or received are recorded on the server and are accessible to you from any location.



Automated Updates

EBS can "push" new releases of applications, such as IMiN™ Communicator, out to the users' desks. This eliminates the need to visit each desk in order to roll out a new version.

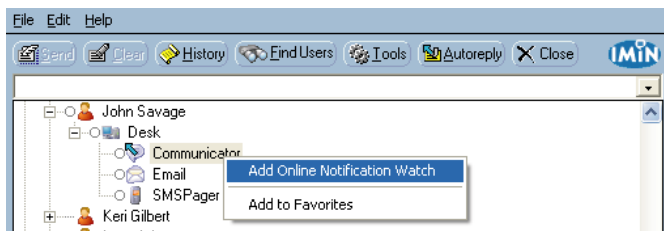
Presence Awareness

By looking in the tree you can see if a user is currently online and actively working on their computer.

- IMiN™ Communicator is offline.
- IMiN™ Communicator is online.
- IMiN™ Communicator is in AutoReply mode.
- IMiN™ Communicator is online, but the user has not typed or moved their mouse for a user defined extended period of time (15 minutes by default).

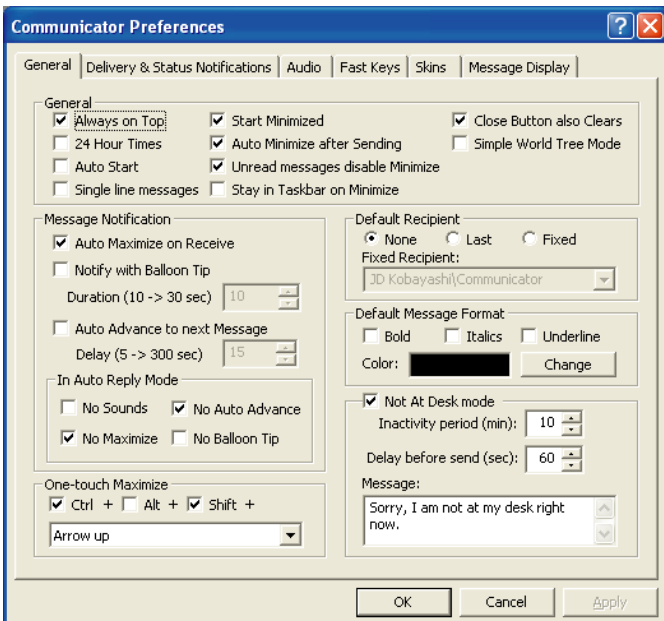
Online Notification

IMiN™ Communicator can be set to notify you when any user you select comes back online.



User Preferences

IMiN™ Communicator incorporates a number of features so that users, or their administrators, can customize the behavior of the user interface. All preferences are stored on the server so that regardless of where a user logs on they utilize the same preferences.

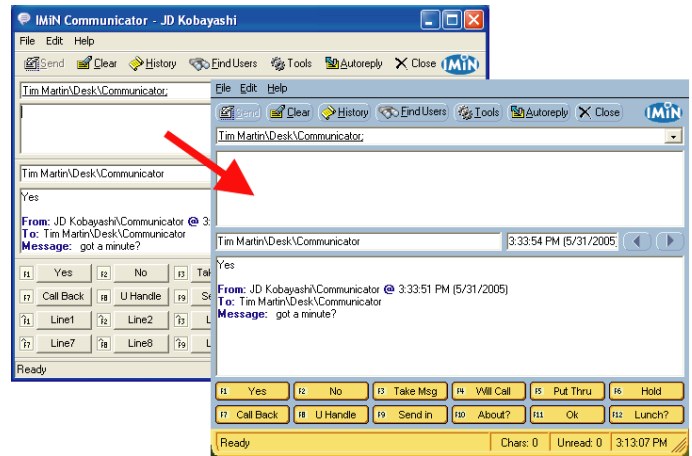


Zones / Groups

Users are organized by "zones" and "groups". Users can also identify their "favorites" in order to simplify access to users.

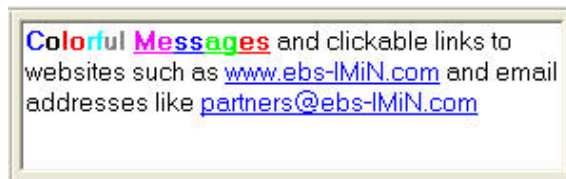
Pick Your Skin

The user interface for IMiN™ Communicator is entirely skin based. You can pick a colorful skin such as Cool Blue or a more practical skin which shows all 24 one touch key buttons.



Formatted Messages

IMiN™ Communicator messages support different colors, clickable web URLs and Email addresses as well as bold, italics and underlined fonts. Right click the message edit control and use the context menu to change your messages characteristics.



Type Ahead

As you type the name of a user in the address bar, IMiN™ Communicator will present a dropdown list of possible matches after the second character.

