

What is Communicator?


Communicator is secure instant messaging for business. It is customizable, scalable, secure and extremely user friendly.


Presence Awareness

By looking in the tree you can see if a user is currently online and actively working on their computer.

: Communicator is offline.

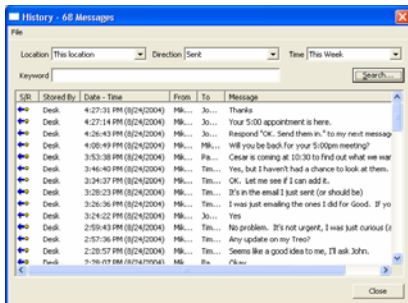
: Communicator is online.

: Communicator is in AutoReply mode.

: Communicator is online, but the user has not typed or moved their mouse for a user defined extended period of time (15 minutes by default).

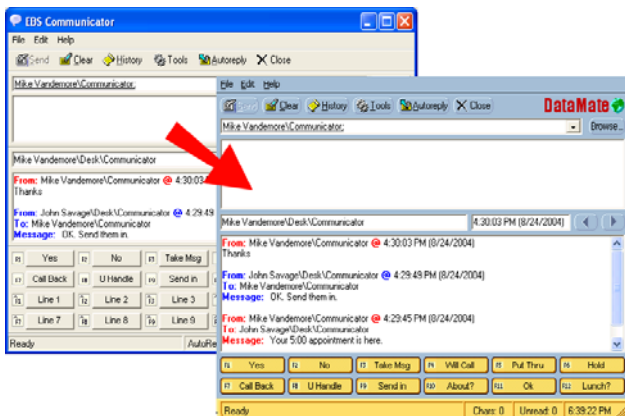
Centralized History Storage/Retrieval

All messages sent and received are recorded on the server and can be searched for and retrieved at any time in the future.



Pick Your Skin

The user interface for Communicator is entirely skin based. The entire look and feel of the interface can be changed by opening the Skin Browser (Edit->Preferences->Skin->Change...). You can pick a colorful skin such as Cool Blue or a practical skin which shows all 24 fast key buttons.



Fast Keys

You can define up to 24 'Fast Key' responses accessible by the F1 to F12 keys and Ctrl + F1 to Ctrl + F12. These allow you to send a message with a single key stroke. Choose Edit->Preferences on the menu and then select the Fast Keys tab to edit your fast response keys.

Type Ahead

As you type the name of a user in the address bar, Communicator will present a dropdown list of possible matches after the second character.



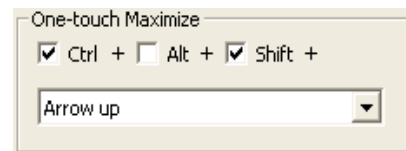
Formatted Messages

Communicator messages support different colors, clickable web URLs and Email addresses as well as bold, italics and underlined fonts. Right click the message edit control and use the context menu to change your messages characteristics.



One Touch Maximize

You can bring up Communicator while working in any other application simply by pressing the One Touch Maximize key combination. By default this key combination is Ctrl + Shift + Arrow Up, but you can change it to any key combination you like by editing the setting on the General tab of your preferences.



Handy Shortcuts

Alt + T: Set focus to the "To" address bar.

Alt + M: Set focus to the outgoing Message text box.

Alt + S or Ctrl + Enter: Send message.

Alt + Left/Right Arrow: View previous/next message.

Escape: Minimize Communicator to the tray.

Alt + G: Toggle skin mode.

Right click the outgoing Message text box to discover more shortcuts for message formatting.